

Kypseli - Skyrrou Street

75 m2 - 2 Bedrooms - Golden Visa Eligible (?250,000)

Under Renovation - Delivery in 2 Months

Located in a well-established residential area, ideal for both families and long-term investment.

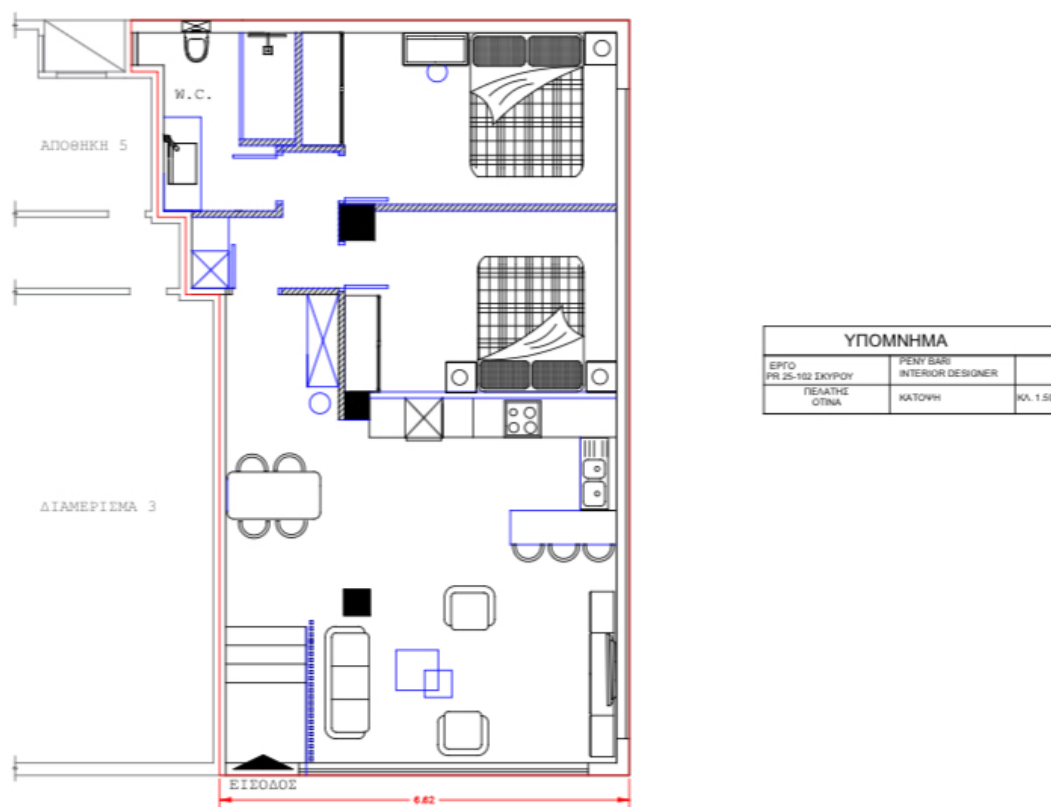
Surrounded by schools, bakeries, markets, pharmacies, and authentic local cafes.

Close to Elikonas Hill - a local green zone and youth sports center.

Walking distance from Fokionos Negri - a vibrant pedestrian street full of cafes, culture, and gardens.

Near Amerikis Square and Pedion tou Areos Park - major green spaces and cultural spots.

The future Metro Line 4 (Kypseli station) will open nearby, further increasing the value of the area.



Floorplan - Approx. 75 m2



This image shows the style and quality of typical finishes used in similar projects.

For more information or to schedule a visit:

Natalia Koromvokis

OTILIA Constructions P.C.

Based in Athens

WhatsApp: +30 698 588 4341

Email: koromvokis.company@gmail.com

Website: greecegoldenvisahome.com